



WREN FARM



VINTAGE
LAND GROUP

POWERED BY VINTAGE REALTY COMPANY, LLC

Exclusively Listed By:

G. Archer Frierson III, Chris Susilovich, Jason Brady

318.222.2244 | vintagelandgroup.com | vintagerealty.com

330 Marshall Street, Suite 200, Shreveport, LA 71101

gfrierson@vintagerealty.com | csusilovich@vintagerealty.com | jbrady@vintagerealty.com



WREN FARM

705± Acres

TEXARKANA, ARKANSAS

LOCATION:

Wren Farm is an hour away from Shreveport and is located off State Highway 296 in Miller County, just outside of Texarkana, Arkansas.

PROPERTY OVERVIEW:

Check out this beautiful Miller County residential/hunting property for sale just outside of Texarkana. Whether you are looking for a nice country home with incredible hunting in your backyard or a recreational retreat in Southwest Arkansas, this tract has what you are looking for. Wren Farm sits in the Mississippi flyway and is surrounded by some long-established Duck Clubs. Consists of a 70 acre ag field, +/- 605 acres of mature WRP ground and a 3200 SF Farm House. Good interior roads and trails allow access throughout. Don't miss an opportunity to own this premium farming and hunting land property!





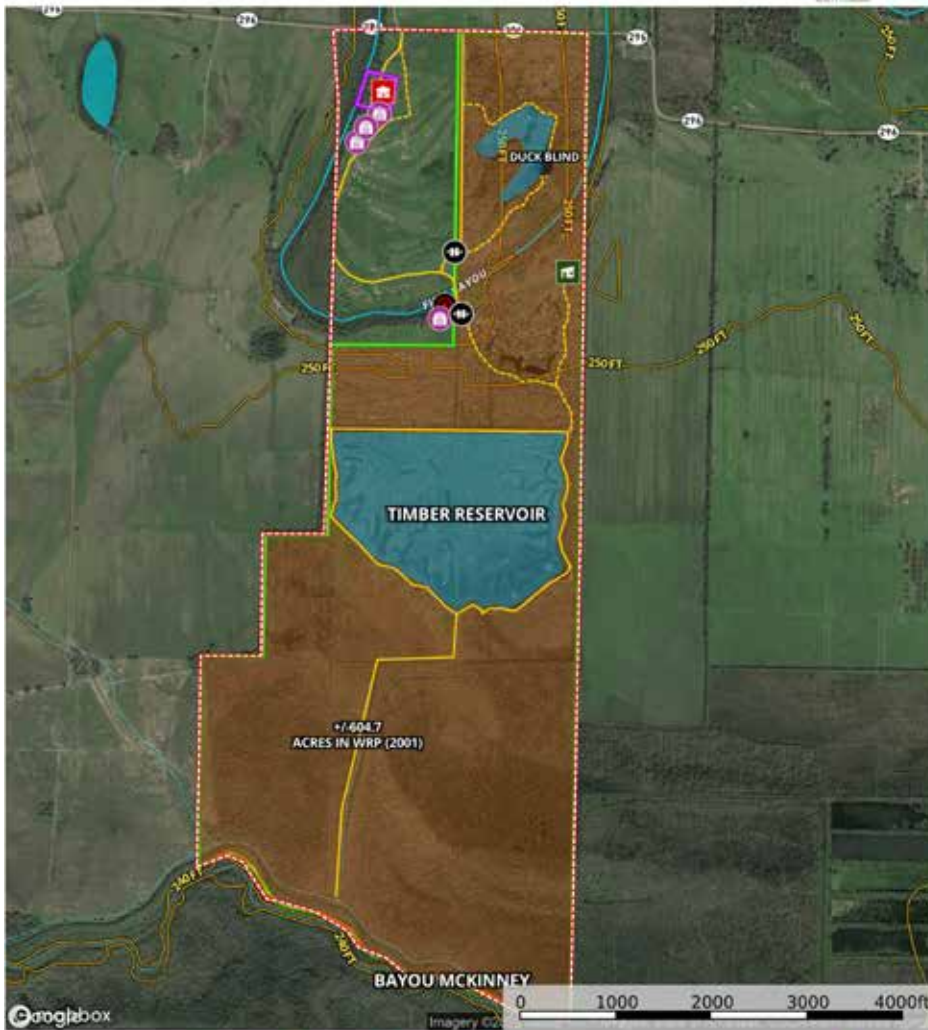
VINTAGE
LAND GROUP



Aerial Map

Lat. 33.471889, Long. -93.881225

Wren-Farm- Listing Price \$1,650,000
Arkansas, 704.7 AC +/-



Jason Brady
P: (338) 564-7951
www.vintagerealty.com
3330 Marshall St, Ste 200, Shreveport, LA

M The information contained herein was obtained from sources deemed to be reliable. Vintagerealty.com makes no warranties or guarantees as to the correctness or accuracy thereof.





Land Description

Wren Farm is an incredible residential/hunting property for sale just outside of Texarkana in Miller County. The property is completely fenced with a 70 acre ag field, +/- 605 acres of mature WRP ground with two flooded impoundments, multiple food plots and a 3200 SF Farm House. Bayou McKinney makes up the southern border with Finn Bayou cutting through the interior. Excellent roads and trails allow access throughout.

Dont miss an opportunity to own this premium farming and hunting land property! Whether you are looking for a nice country home with incredible hunting in your backyard or a recreational retreat in SW Arkansas this tract has what you are looking for. Wren Farm sits in the Mississippi flyway and is surrounded by some long-established Duck Clubs.





Wildlife

The property has had little to no hunting pressure in the past 15 years. Wren farm is home to a strong whitetail population with many mature bucks. With little management this farm could be a trophy hunting destination. There are multiple wing shooting options on the various water features throughout. The property currently holds ducks throughout the migration season. Greater waterfowl opportunities can easily be developed, making this a destination hunting camp. Potential quail habitat plan has been drawn up for the farm and is available.



Recreation

Wren farm is a year around retreat offering space for all kinds of activities including, hiking, horseback riding, and ATVing. The property is set up perfectly for family gatherings, social functions and Holiday weekends. Offers endless possibilities for year around opportunities to get outside and make memories.



AGENT INFORMATION



**G. ARCHER FRIERSON III,
CCIM, SIOR**

G. Archer Frierson, III joined Vintage Realty Company as a licensed commercial real estate agent in 2004. In 2017, he was named as the Director of Brokerage and Leasing for Vintage's 17 agents and administrative staff. Prior to Vintage, Archer was affiliated with Coldwell Banker Commercial in Savannah, Georgia where he was a licensed agent and real estate appraiser.

Over the course of his 15 plus year career Archer has been active in all facets of the commercial real estate industry and has represented numerous local, regional and national companies. He has also been involved in the disposition of various investment properties including office buildings, shopping centers, warehouses, self-storage facilities, and apartment complexes.

Archer is an active leader in the Shreveport/Bossier community. He was a 2005 graduate of the Leadership Shreveport program through the Greater Shreveport Chamber of Commerce, as well as a 2006 Community Catalyst for the Community Foundation of Shreveport/Bossier City.

In 2007, Archer was named to Northwest Louisiana's Top 40 under 40 by the Greater Shreveport Chamber of Commerce. He is a 2012 graduate of the Leadership Louisiana program developed by the Council for a Better Louisiana for rising business and civic leaders throughout the state.

He is a graduate of Louisiana State University with a B.S. in Business Administration and holds an MBA from Centenary College. He is also a Certified Commercial Investment Member (CCIM), a member of the Commercial Investment Division of the Northwest Louisiana Association of Realtors, and has earned the SIOR designation as an industrial specialist.

To contact Archer, call 318-222-2244 or email him at gfrierson@vintagerealty.com.

AGENT INFORMATION



CHRIS SUSILOVICH

Chris Susilovich joined Vintage Realty Company in 2017 in their Commercial Brokerage and Leasing Division and is licensed by both the Louisiana Real Estate Commission and the Texas Real Estate Commission.

Chris spent 11 years in Houston, TX as a business development executive, fundraiser and consultant prior to returning home to Shreveport with his family. While in Houston, he served as the Executive Director for Houston Safari Club and consulted for several organizations to help improve process efficiencies, develop strategic plans and enhance development practices. Chris' vast experience with a broad range of organizations and businesses has greatly strengthened his sphere of influence throughout Texas and Louisiana.

Chris is a graduate of Centenary College of Louisiana with a degree in Environmental Science and holds a Master's of Science from Stephen F. Austin State University. Chris is currently pursuing CCIM designation as a Commercial Investment Real Estate Institute Candidate member.

Chris is a driven and passionate individual when it comes to philanthropy and community service. He has been actively involved with such organizations as Noel United Methodist Church, CADA of Northwest Louisiana, Dream Hunt Foundation, First Tee of Northwest Louisiana and the Norwela Council of Boy Scouts of America. Chris is married to Sarah Susilovich and they have two children, son Charlie and daughter Kathryn.

To contact Chris, call 318-222-2244 or e-mail him at csusilovich@vintagerealty.com.



JASON BRADY

Jason Brady joined Vintage Realty Company in their Commercial Brokerage and Leasing Division in the summer of 2020. Jason has extensive market knowledge with 25 years of experience in the restaurant and retail world as the owner/operator of Cadre Hospitality Group. Jason also brings 5 years of experience in consulting and business development from his company Stag Culinary Outfitters.

Over his career Jason has been active in the community being involved in Shreveport Green, SRAC, Young Life, Committee of 100, Ducks Unlimited and CCA.

Jason is a graduate of Louisiana State University with a B.S. in Finance and a graduate of Johnson and Wales in Charleston, SC with an A.S. in Culinary Arts. He is married to Beth Brady and has two sons Mason and Will.

To contact Jason, please call 318-222-2244 x 689 or email jbrady@vintagerealty.com.



VINTAGE
LAND GROUP

CREATED BY VINTAGE REALTY COMPANY, LLC

Exclusively Listed By:

G. Archer Frierson III, Chris Susilovich, Jason Brady

318.222.2244 | vintagelandgroup.com | vintagerealty.com

330 Marshall Street, Suite 200, Shreveport, LA 71101

gfrierson@vintagerealty.com | csusilovich@vintagerealty.com | jbrady@vintagerealty.com